

SUNPROOF

P R O

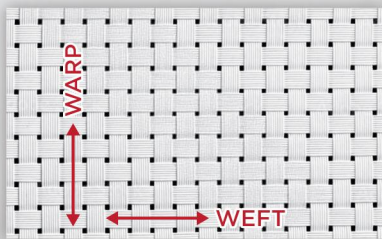
VOL. I

SUNPROOF PRO

With Ateja created Sunproof PRO to provide a good combination of technical textile with a stunning appearance and extremely durable to any weather conditions, ensuring an outstanding color fastness results.

Sunproof PRO proudly presents wide range choices for more than 15 color ranges to play with the ambience.

Greenguard, Oekotex Certification proved that Sunproof PRO is phthalate free material and completely free from substances which might be harmful to human and environment.



VERY IMPORTANT: in case of using Sunproof PRO in the wrong sense, «sagging» (or «pocket») effect could happen.

Please refer to the following pictures:

same seat after resistance tests

Correct warp and weft sense:

no problem, the tension remains perfect, no sagging.



SCAN
ME



www.sunproof.co.id

Strong, Durable, Flexible



OUTDOOR LIVING. RELIEVE YOUR SENSES.

The lifestyle of modern living has gradually shifted from indoor to outdoor living. Just imagine sitting in your beautiful garden, relaxing on your veranda or dozing off by the pool side while enjoying the cool breeze gently brushing through your skin and admiring the beautiful view of the nature decorated with flower, green pasture and clear blue sky in perfect harmony.

As a dynamic company which focuses on creativity and innovation, we proudly present to you Sunproof Sling, a woven fabric consists of PVC coated polyester yarn which provides incomparable performance : strong, breathable, vibrant and durable (strong color fastness, and excellent resistance to ultra violet rays, mould and tear).

“Comfort & Breathable”

Sunproof® PRO is breathable. The openness of the sling allows the air to flow through, releasing heat and providing you with the coolness as you relax on the seat.

“Strength & Durable”

Sunproof® PRO applies special ultraviolet blocking agents which protect the polymer back bone of the PVC coated fiber, therefore it is proven to have the strong ability to withstand the damaging effect of sunlight, wind, rain, and humidity.

“Excellent Color Fastness & Long Lasting”

Sunproof® PRO is uses excellent quality of raw material. This is to ensure that when it is exposed to sun light or rain for an extended period, it will not fade or lose the intensity of its color. It is long lasting.

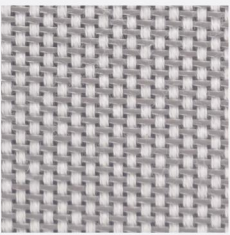
“Resistance to Humid Environment & Staying Fresh”

Sunproof® PRO is carefully treated to inhibit microbial development, mould stain, even in the moist environment ; keeping the fabric fresh and clean.

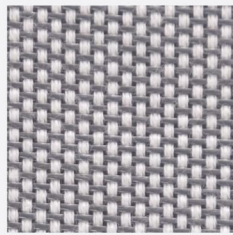
“Easy Maintenance & Sustainable”

Sunproof® PRO is carefully processed and has gone through a special treatment to resist stain, oil, and water. It is easily maintained. You can simply clean it with a wet sponge or a damp cloth with a mild detergent. Then just let it to dry thoroughly.





OLYMPUS
130



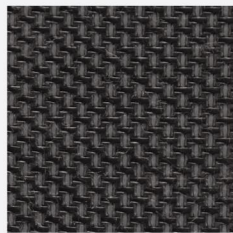
OLYMPUS
131



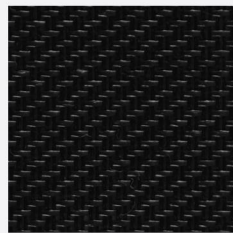
OLYMPUS
160



OLYMPUS
180

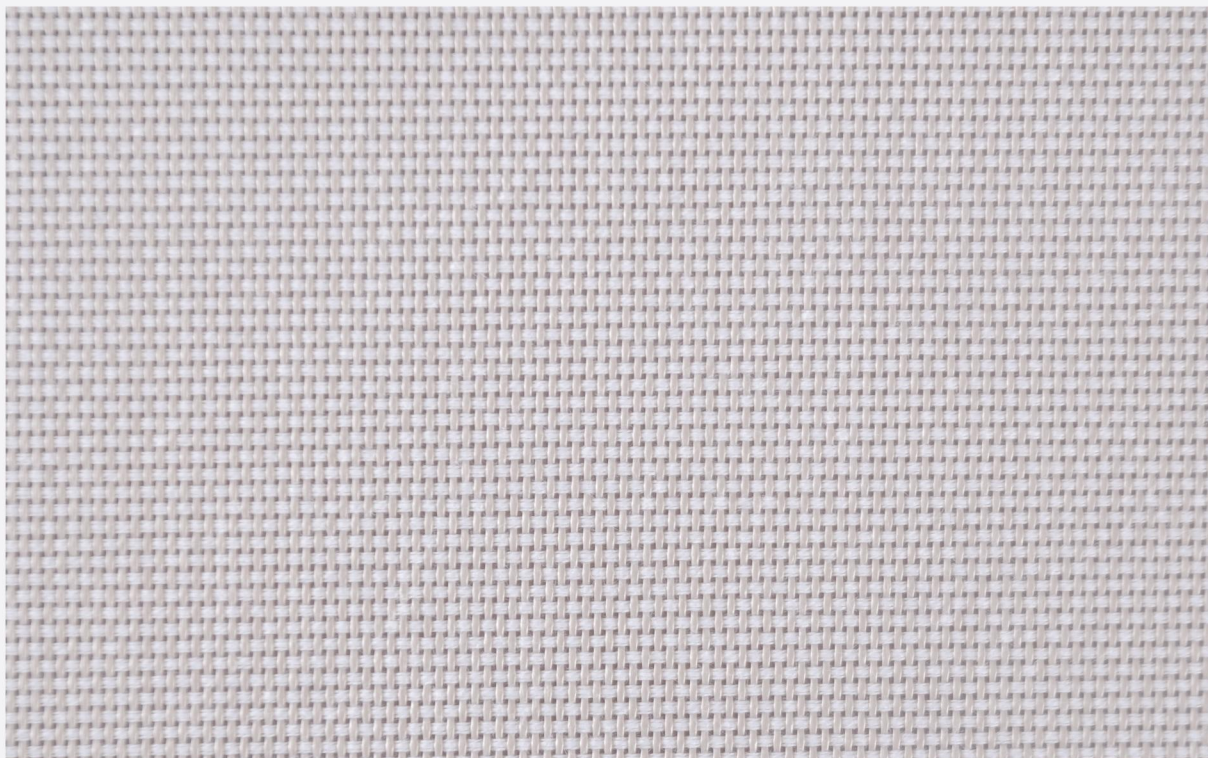


OLYMPUS
091



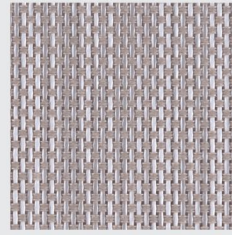
OLYMPUS
090

OLYMPUS

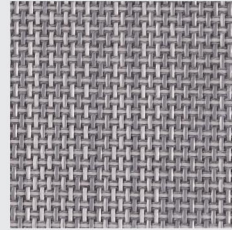


OLYMPUS
140

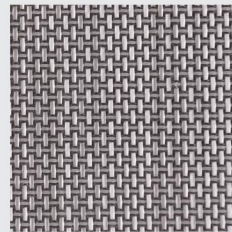




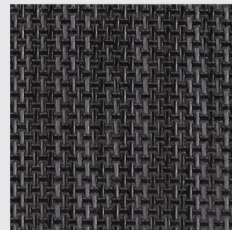
KALIKA
140



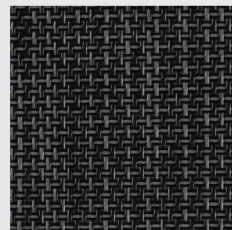
KALIKA
141



KALIKA
160

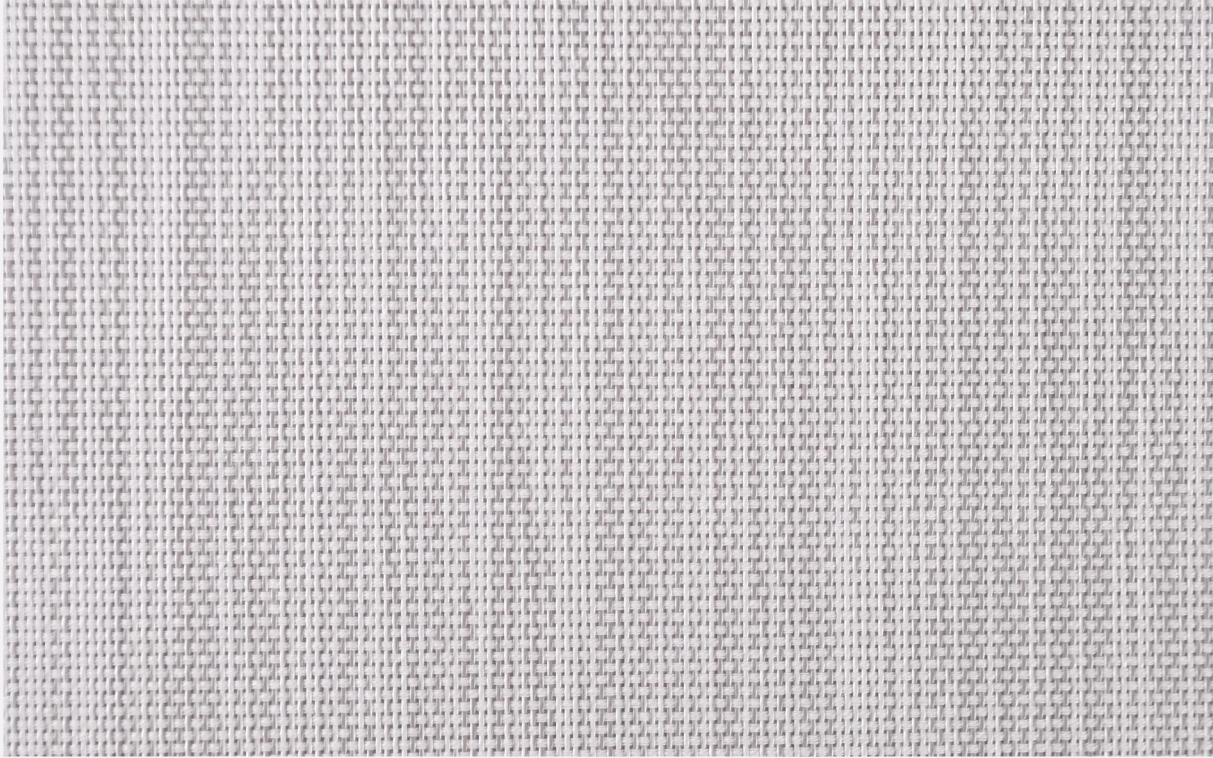


KALIKA
091



KALIKA
090

KALIKA

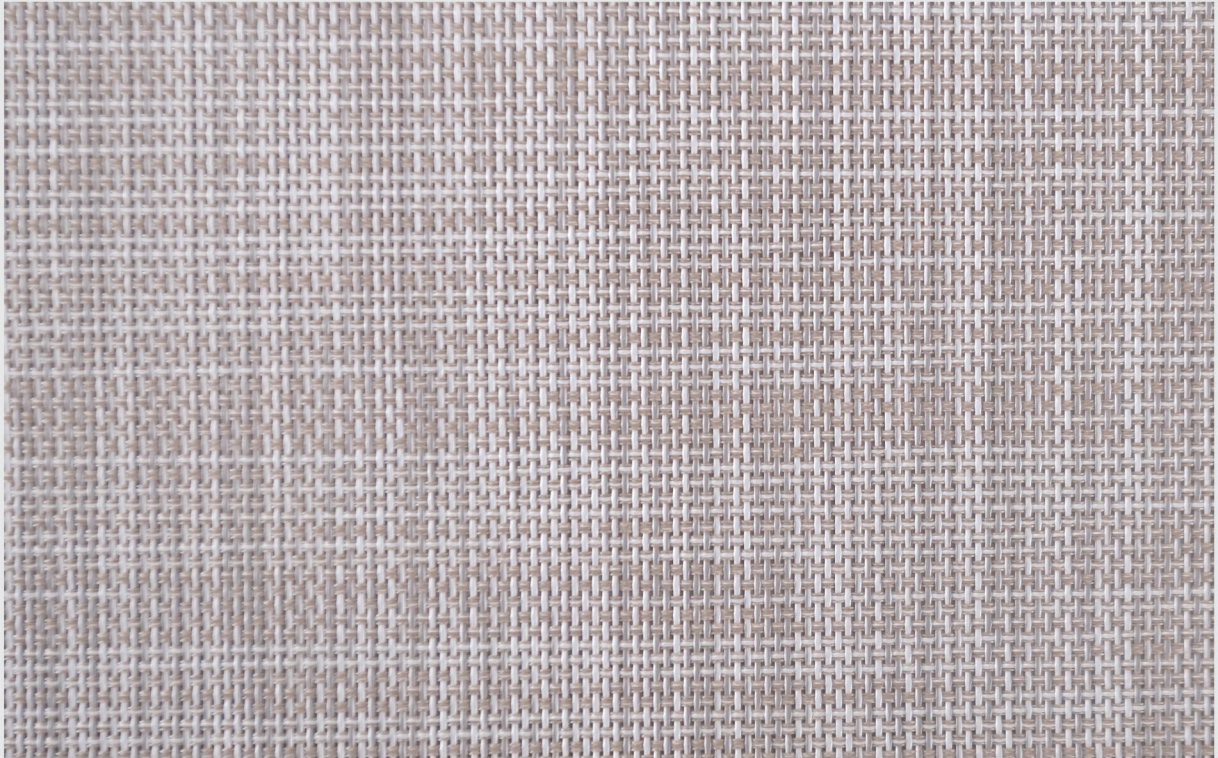


KALIKA
131

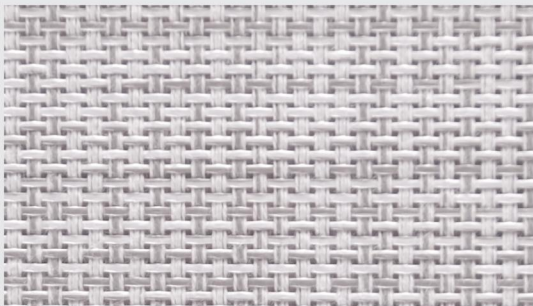


HALLA

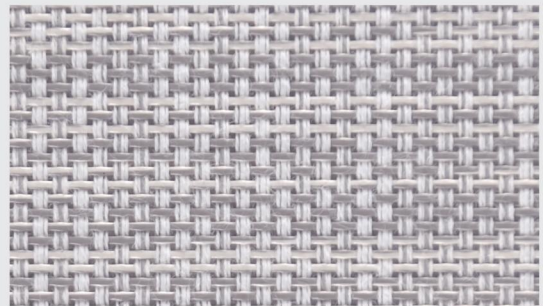




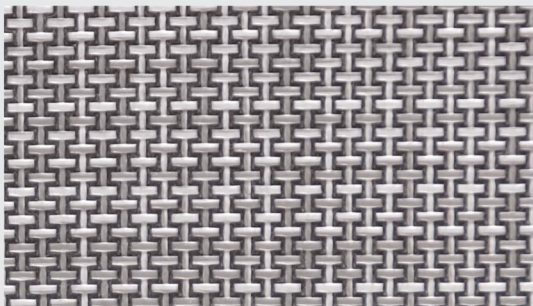
HALLA
140



HALLA
131



HALLA
132



HALLA
160



HALLA
091

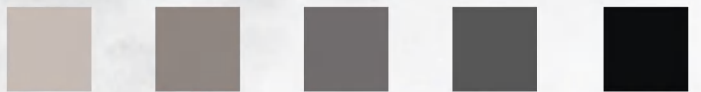
Sunproof Pro

by Ateja

Technical Data

| | |
|--|--|
| Composition | 63% PVC 37% Sunproof® Yarn |
| Yarn Count ISO 7211 / 2 | |
| - Warp | 17 ± 5% /inch |
| - Weft | 38 ± 5% /inch |
| Construction | 1 x 3 |
| - Warp | 1 PVC |
| - Weft | 2 Yarn x 1 PVC |
| Weight ISO 2286 - 2 | 490 ± 5% gr/m ² |
| Width | 180 cm |
| Breaking Strength ISO 1421, Strip Test Method | |
| - Warp | 250 daN/5cm |
| - Weft | 150 daN/5cm |
| Elongation Under load 20 daN ISO 1421 | |
| - Warp | 2.5% |
| - Weft | 4% |
| Abrasion Resistance ISO 12947 - 2 | 50.000 rubs 0 (0 = nothing - 5 = important damage) |
| Pilling Test ISO 12945 - 2 | 5.000 rubs 3 - 4 (1 = important - 5 = important damage) |
| Tear Strength DIN 53363 | |
| - Dry | 40 daN |
| - Wet | 35 daN |
| Color Fastness to Rubbing EN ISO 105 - X12 | |
| - Dry | 4 - 5 |
| - Wet | 4 - 5 |
| Color Fastness to Artificial Weathering ISO 105 : B04 | 8 |
| Extreme Light Stability ASTM G53 - 96 | 2,000 hours) |
| Mould Resistance ISO 846 | A |
| Flammability | PASS |
| - BS EN 1021 - 1 Cigarette | |
| - BS EN 1021 - 2 Match | |
| - NFPA 701 - 2010 | |
| - M2/NFP92 - 507 | |
| Extreme Working Temperature | - 30°C / + 70°C |





 **ATEJA**[®]



PLEASE
DO NOT BURN
THIS SAMPLE



PLEASE DO NOT
THROW THIS SAMPLE
INTO WATER