

SUNPROOF

LITE

VOL. I



PROD BENE

03
DESIGNS

48
COLORS



Hygiene Protection

Safe for your health. Sunproof fabric is specially treated with sanitized product for hygiene protection. This product inhibits microbial developments and mould stains.



Superb UV Protection

High UV Protection rating. Sunproof fabric has gone through high quality of testing and evaluated by an internationally recognized research and service centre, the Hohenstein Institute, Germany.

Proven Quality. Sunproof has obtained UV Standard 801 certificate - protect 80 which means it is capable of blocking more than 97% UV Ray.



Safe to Your Baby

Sunproof is Oeko - Tex certified class 1. Oeko - Tex is the world's leading ecolable for textile. Being Oeko - Tex certified class 1 means Ateja Sunproof fabric are free of substances which might be harmful to humans and environment. It is safe even to baby.



Environmental Friendly

Woven from 100% solution dyed olefin yarn. Sunproof has chosen to use the premium quality of Solution Dyed Olefin. Solution dyeing is a clean manufacturing process as the color is added before the yarn is extruded. It is friendly to the environment because no dye bath processes are used, eliminating waste effluents, which may pollute air and water. Sunproof fabric is 100% recyclable.

PRODUCT BENEFITS



Excellent Weatherability

Resistant to UV damage and fading. Sunproof applies excellent ultraviolet blocking agents which protect polymer backbone of the fabric from the effect of UV radiation.

Perfect for all outdoor applications. Therefore as an outdoor fabric, Sunproof is proven to have a strong ability to withstand the effects of prolonged exposure to sunlight, wind, rain and humidity. It is long lasting.



Outstanding Color Fastness

Strong color fastness to artificial weathering. Some fabrics if exposed to sunlight for an extended period will fade or lose their intensity of color.



Easy Maintenance

Extreme stain resistant. Sunproof fabric is carefully processed and has gone through a special treatment to reduce the fabric absorption of soil and stains. It keeps the fabric looking clean, fresh and new.

Water repellent. Sunproof fabric is protected by an invisible shield around each of its fiber to keep the fabric dry and clean. It is a natural anti adhere.



Wide Range of Colors & Designs

Sunproof provides choices. Every individual may have different taste and different color preferences. Therefore, wide variety of designs and colors are launched to the market to suit your needs.

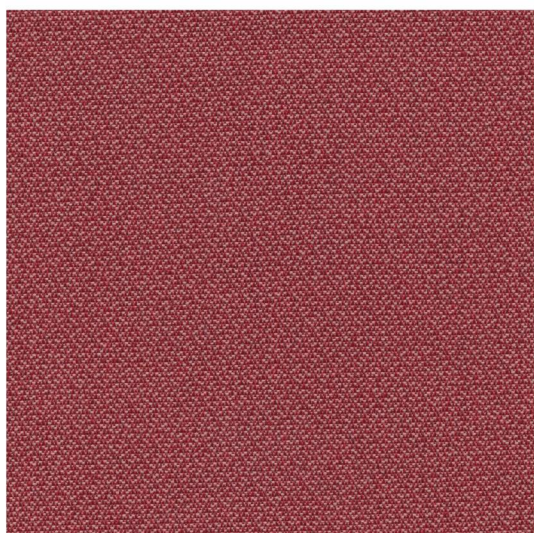
Let us be a trend setter. Sunproof makes every effort to be the leader in providing you new colors and designs one-step- ahead of others.



Waste Water Reduction

With our technology process, eliminates the harmful chemical effluents if dyeing process and reduce the water usage.





Composition : 100% Olefin
Width : 140 cm
Weight : 186 gr/m²
Abrasion Resistance : 18,000 rubs
(BS EN 14465 Annex A)

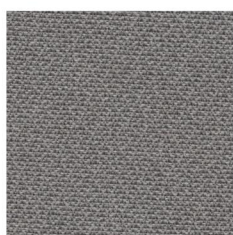
RHINE



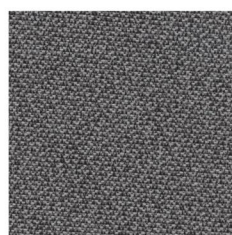
010



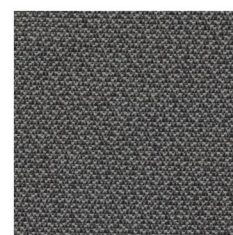
165



160



163



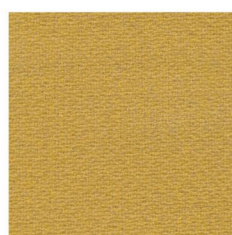
090



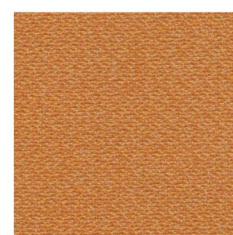
140



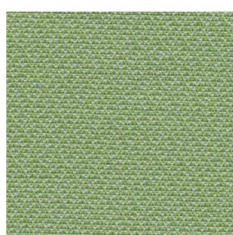
080



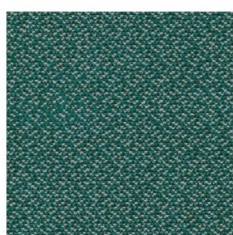
050



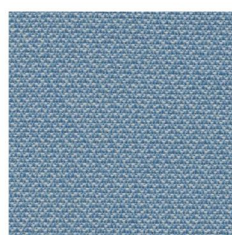
100



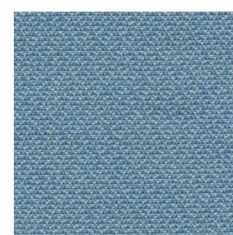
020



230



040



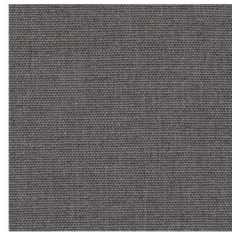
041



165



169



167



091



140



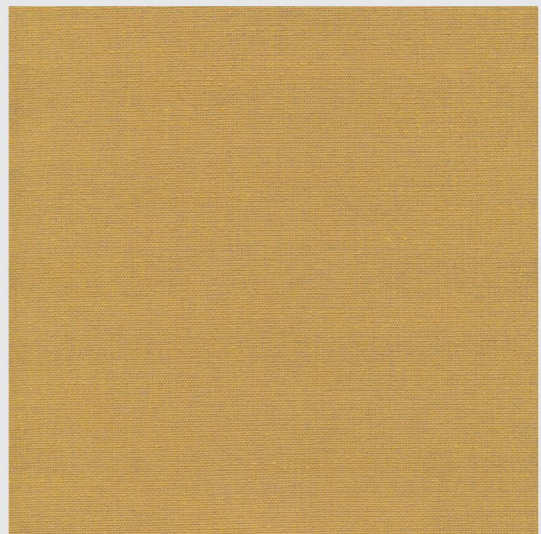
180



080



035



050

Composition : 97% Olefin
3% Polyester

Width : 140 cm

Weight : 182 gr/m²

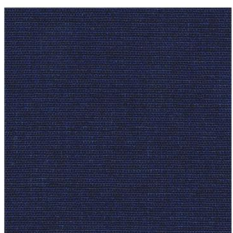
Abrasion Resistance : 10,000 rubs
(BS EN 14465 Annex A)



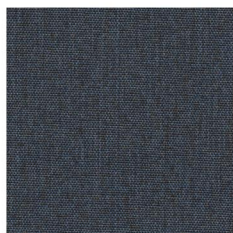
100



010



121



120



040



220



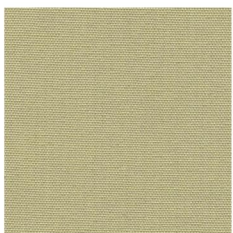
090



131



ISSHIKI



025



020



230

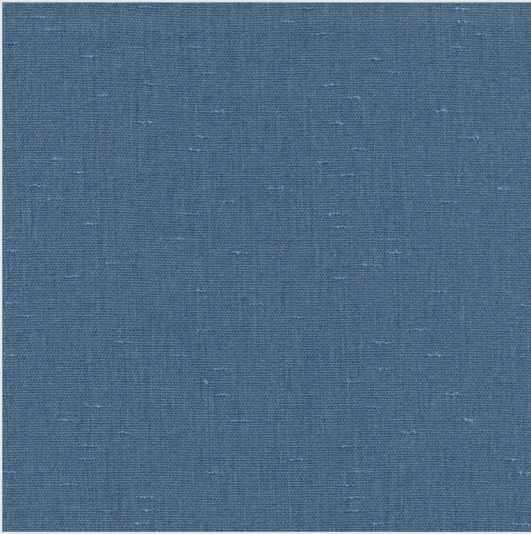


214

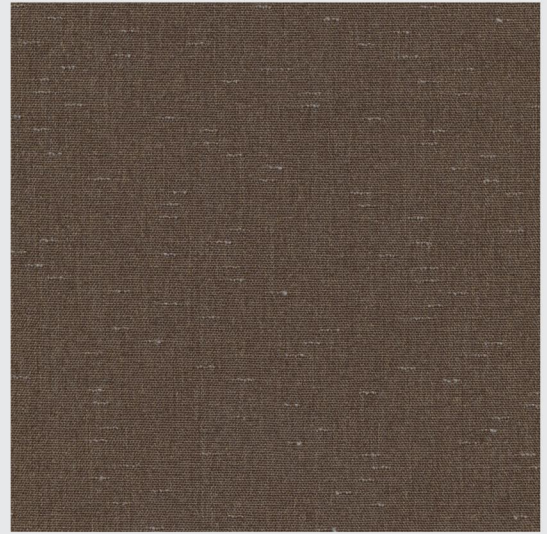


TALISE

Composition : 99% Olefin
1% Polyester
Width : 140 cm
Weight : 179 gr/m²
Abrasion Resistance : 10,000 rubs
(BS EN 14465 Annex A)



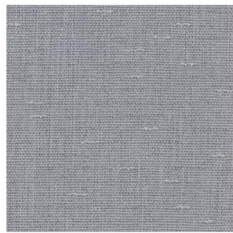
040



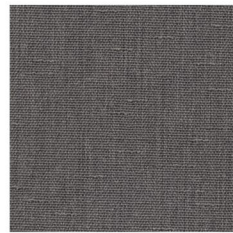
081



165



160



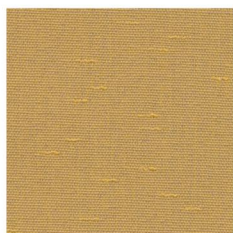
167



091



180



050



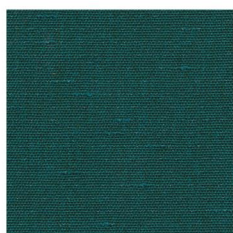
100



010



020



230



210



121

Technical Data

	Rhine	Isshiki	Talise
Composition	100% Olefin	97% Olefin 3% Polyester	99% Olefin 1% Polyester
Weight [gr/m ²] ISO 2286 - 2	186	182	179
Width [cm]	140	140	140
Tensile Strength [N] EN ISO 13934-1 - Warp - Weft	1,100 600	1,220 590	1,080 580
Tear Strength [N] EN ISO 13937-3 - Warp - Weft	90 55	75 60	85 55
Seam Slippage [mm] Load applied 180 N prEN ISO 13936-2 - Warp - Weft	5 5	4 5	4 5
Color Fastness to Rubbing [rating] EN ISO 105 - X12 - Dry Warp Weft - Wet Warp Weft	4 4 4 - 5 4 - 5	4 - 5 4 - 5 4 - 5 4 - 5	4 - 5 4 - 5 4 - 5 4 - 5
Color Fastness to Artificial Weathering [rating] BS EN ISO 105 : B04	8	8	8
Abrasion Resistance BS EN 14465 Annex A	18,000	10,000	10,000
Water Repellency : Spray Test [rating] AATCC Test Method 22-2005	70	70	70
Color Fastness to Chlorinated to Pool Water [rating] BS EN ISO 105 - E03	4 - 5	4 - 5	4 - 5
Color Fastness to Sea Water [rating] BS EN ISO 105 - E02	4 - 5	4 - 5	4 - 5
Flammability BS EN 1021 - 1 - Cigarette	Pass	Pass	Pass
Anti Mildew AATCC 147 : 2011 & 30 - 2004	Pass	Pass	Pass
Pilling Resistance [rating] EN ISO 12945 - 2 after 2,000 rubs	3 - 4	4 - 5	4 - 5
Soil release [rating] AATCC 130	5	5	5
Dimensional Stability to Washing EN ISO 6330 - Length - Width	<-1.0% <-1.0%	<-1.0% <-1.0%	<-1.0% <-1.0%
Weatherability [hours] ASTM G53 - 96	1,500	1,500	1,500



An inset image showing a close-up of the sofa's cushions and a QR code. The QR code is located in the bottom right corner of the inset. To the left of the QR code, the text "SCAN ME" is displayed. Below the QR code, the "sunproof" logo is visible, and at the bottom of the inset, the website address "www.sunproof.co.id" is provided.

SCAN
ME



www.sunproof.co.id

repellence
Protection



produced by:

 **ATEJA**[®]



PLEASE
DO NOT BURN
THIS SAMPLE



PLEASE DO NOT
THROW THIS SAMPLE
INTO WATER