

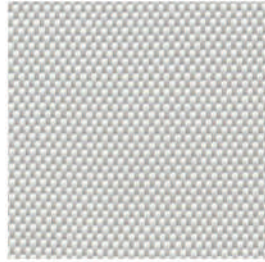
THE ULTIMATE SOFT TOUCH

VOL. I

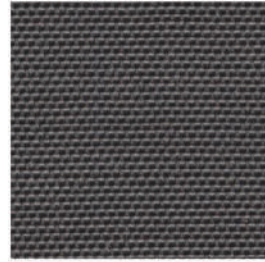




130



164



167



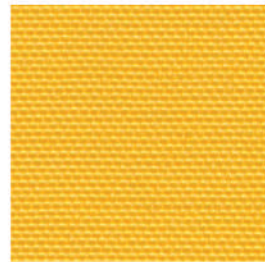
090



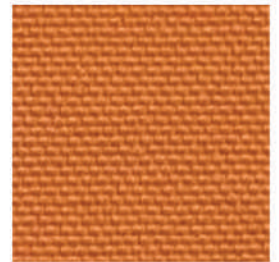
181



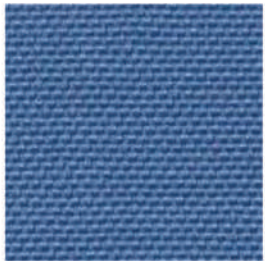
081



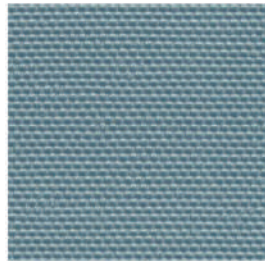
050



101



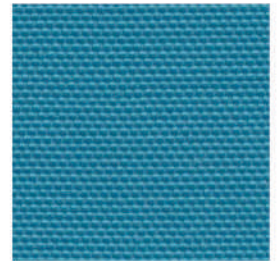
040



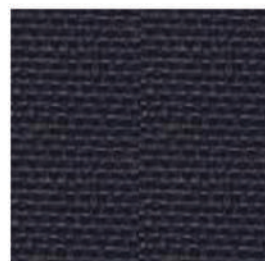
042



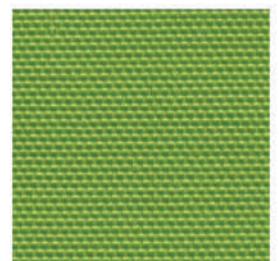
211



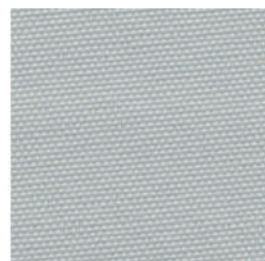
210



121



021

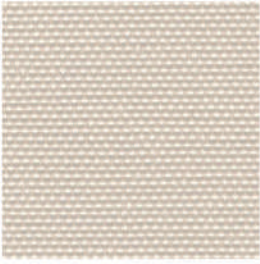


168

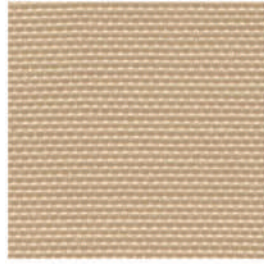


145

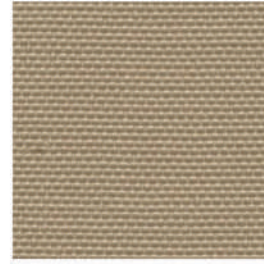
NEW CARTENZA



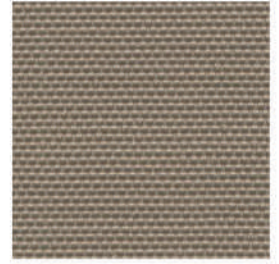
144



142



180



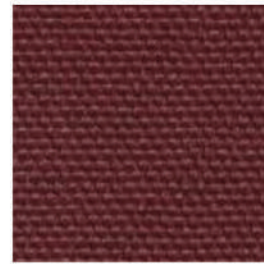
161



010



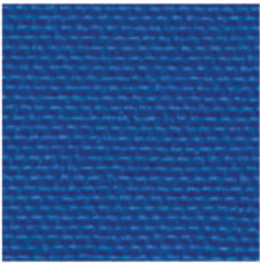
011



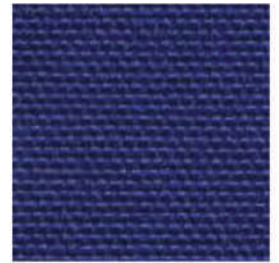
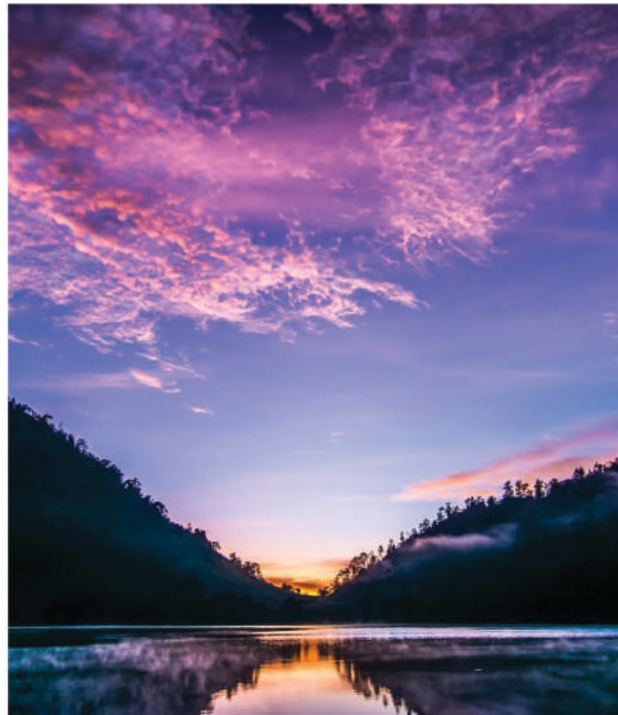
030



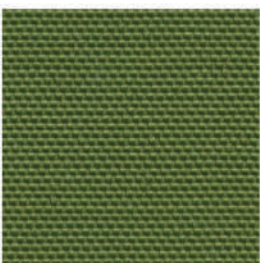
060



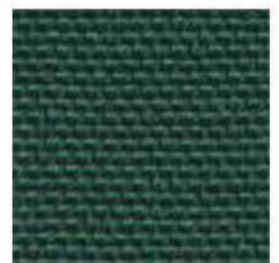
044



122



070



230



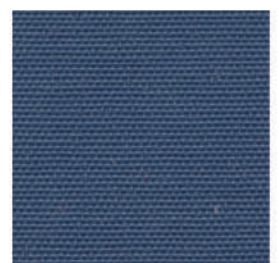
190



022



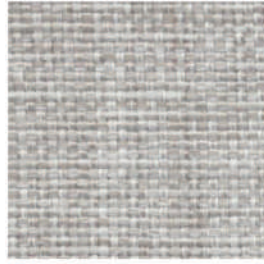
045



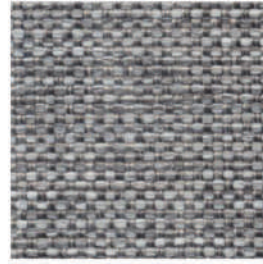
123



130



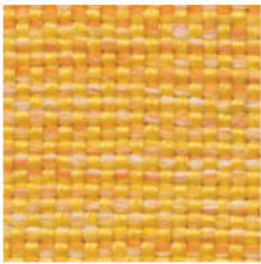
164



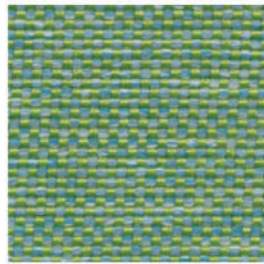
161



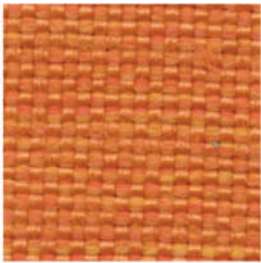
160



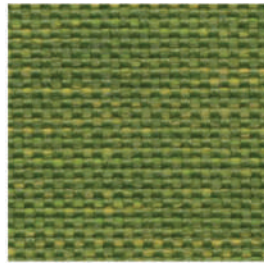
050



025



100



020



093



162



142



190



NEW SOUTHEND



141



140



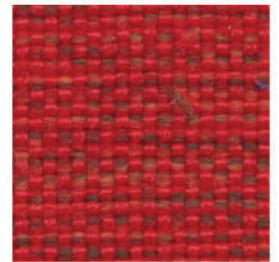
168



165



060



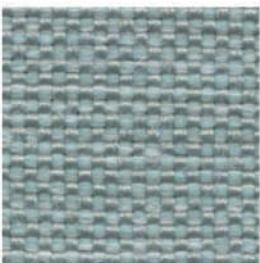
010



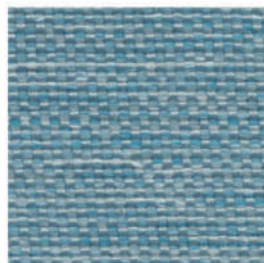
120



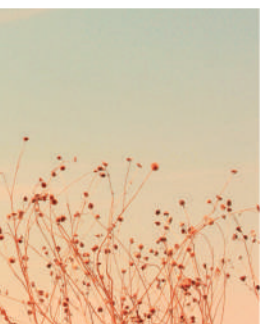
030



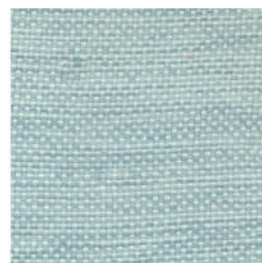
221



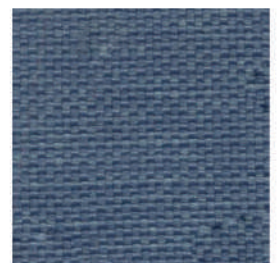
040



026



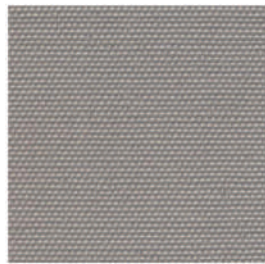
041



121



130



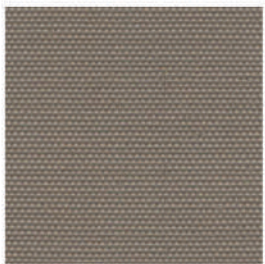
165



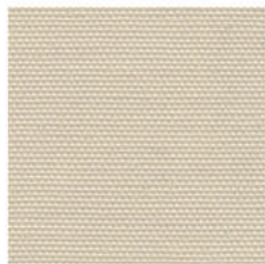
163



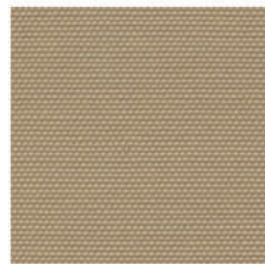
167



161



143



180



181



050



101



010



011



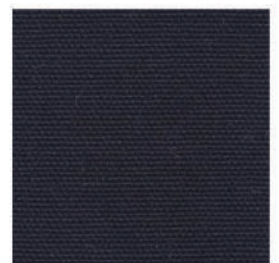
210



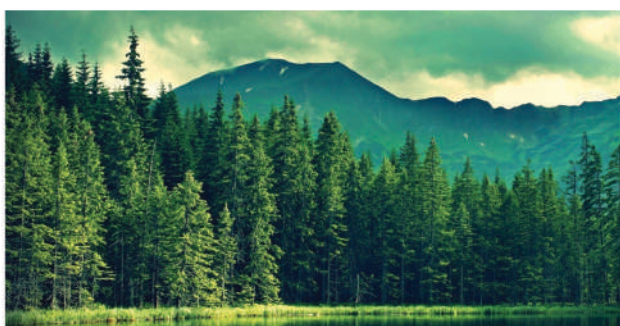
040



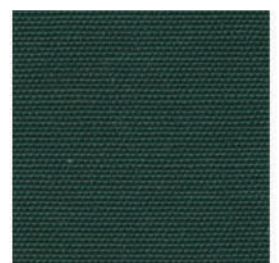
044



121



021



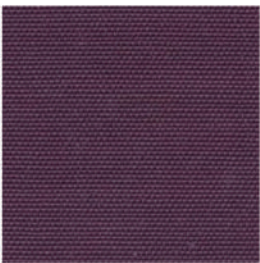
230



090



080



060



045



122



022



190

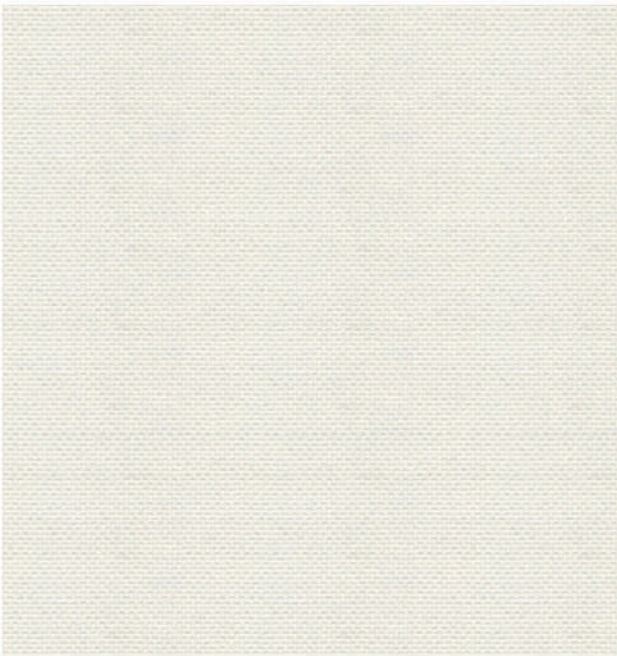


146

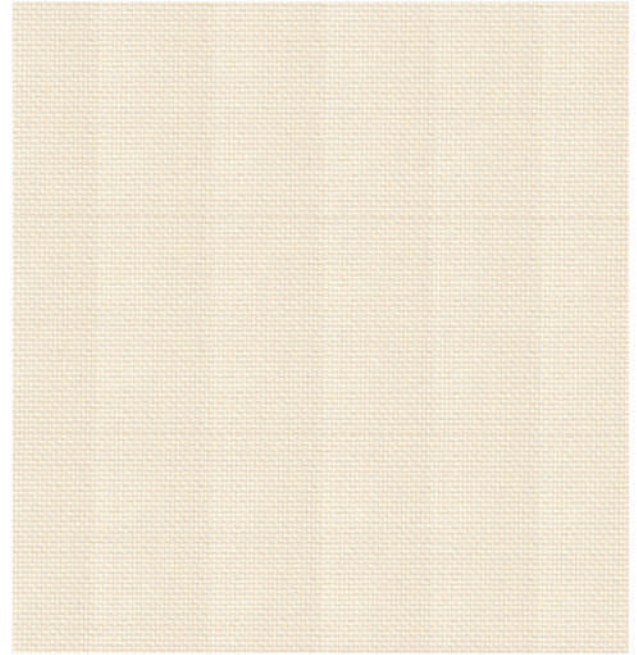


169

NEW STINSON



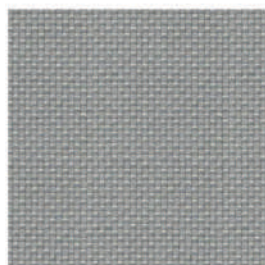
131



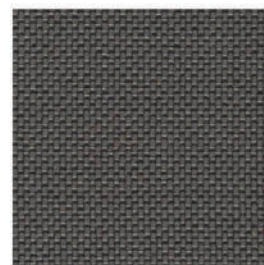
143



130



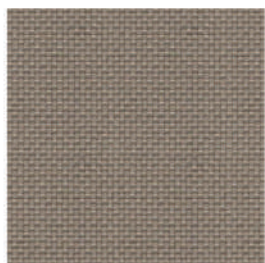
165



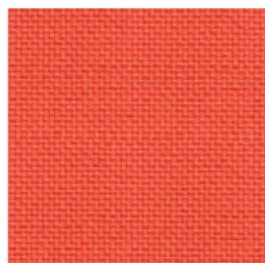
163



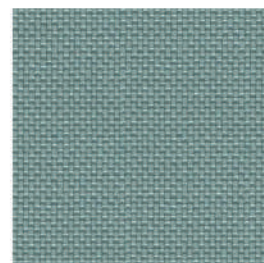
090



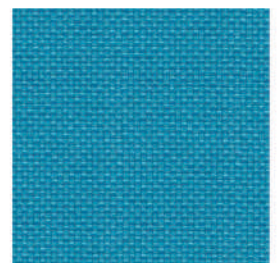
161



100



220

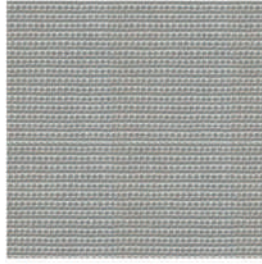


210

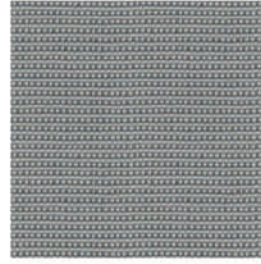
NEW WIFERA



131



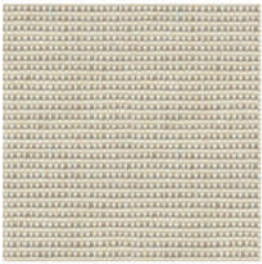
163



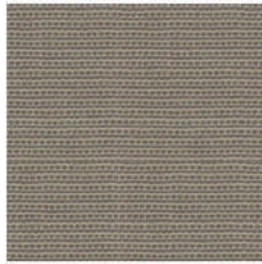
160



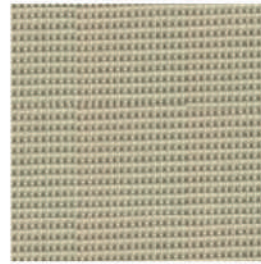
091



140



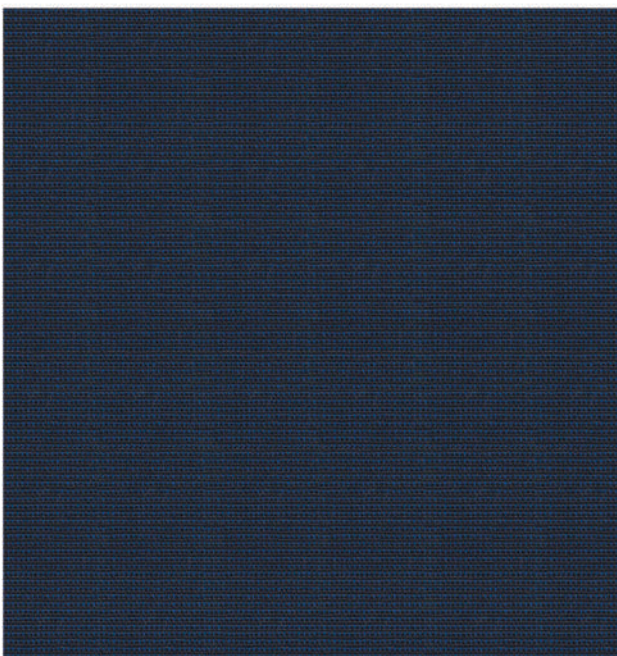
161



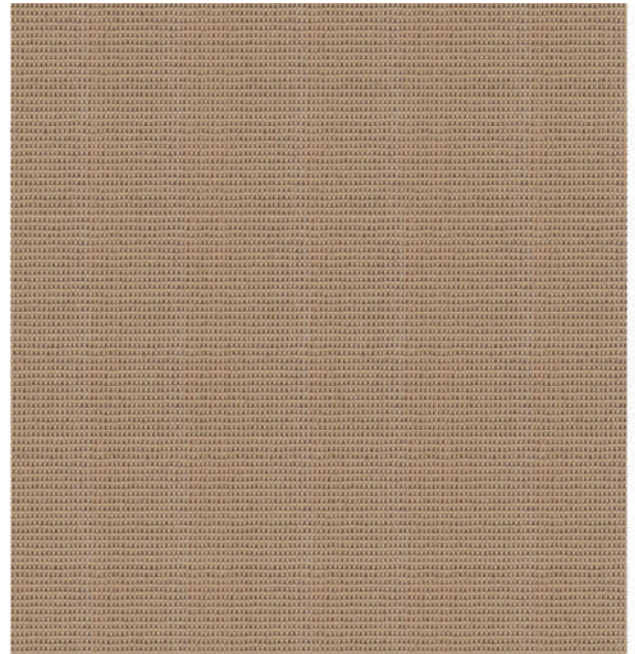
143



162



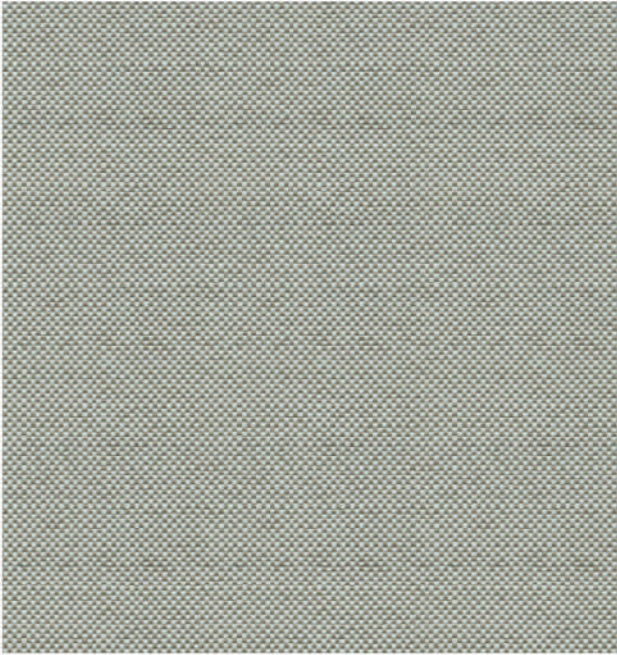
121



180



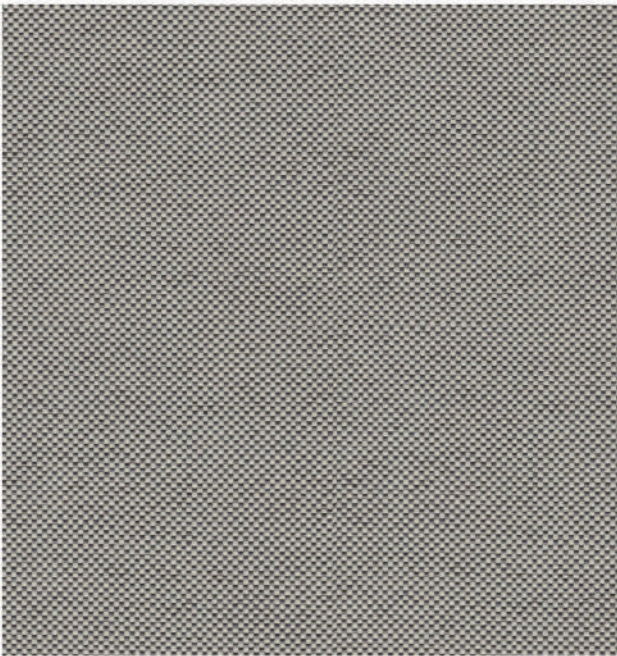
NEW PALLAZO



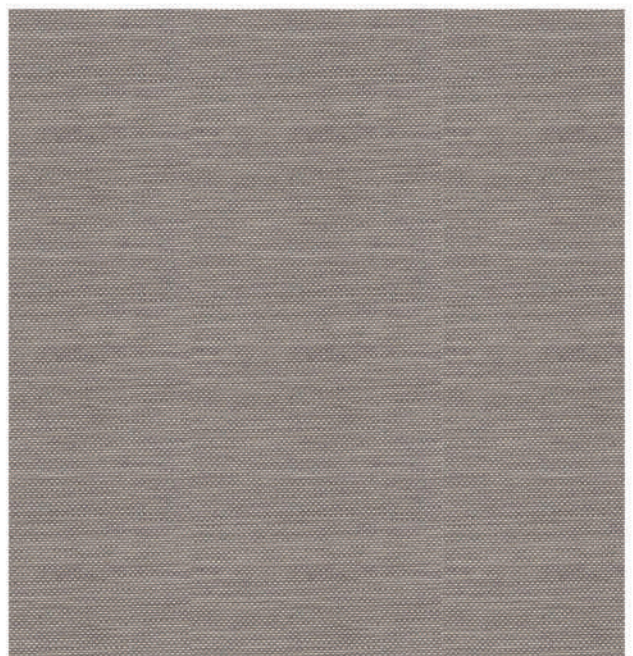
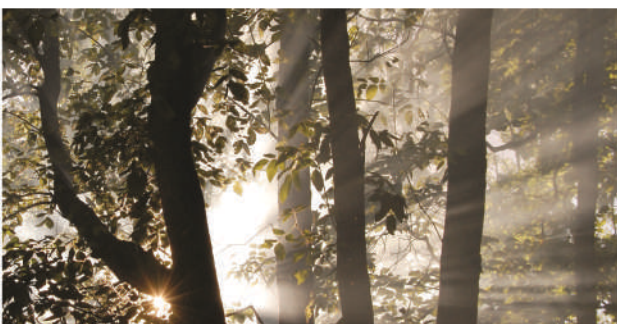
143



141



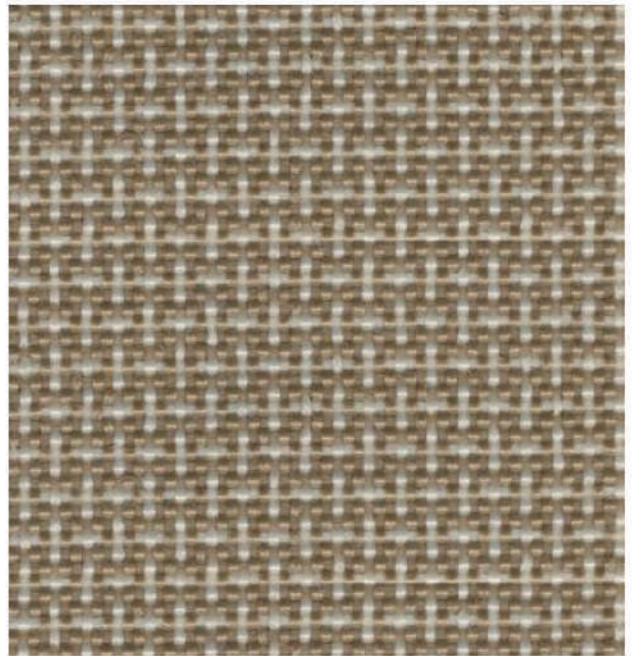
161



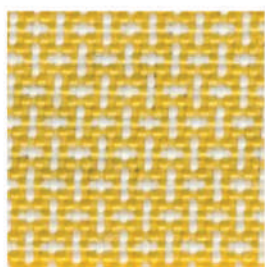
163



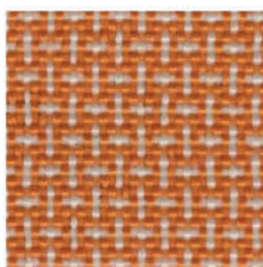
144



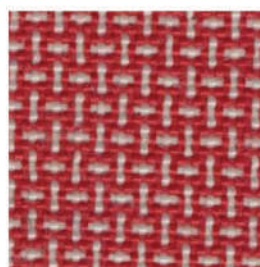
181



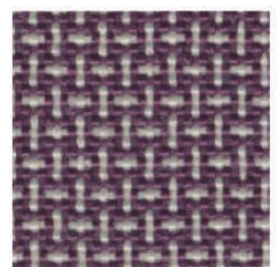
050



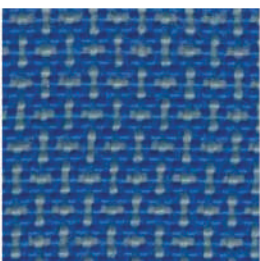
101



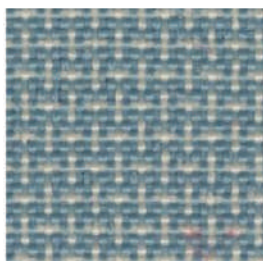
110



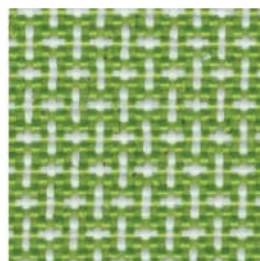
060



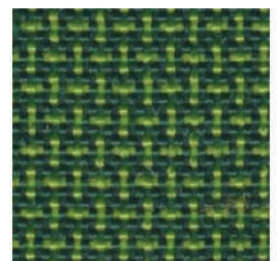
044



042



021

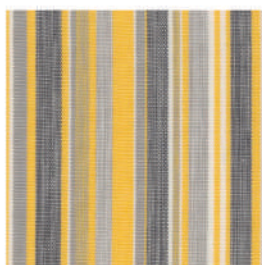


230

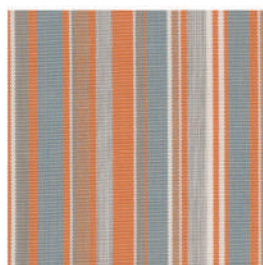
TAVIRA



080



051



103



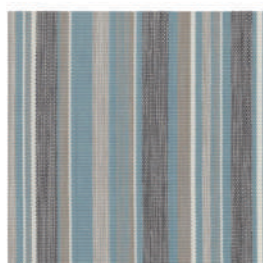
010



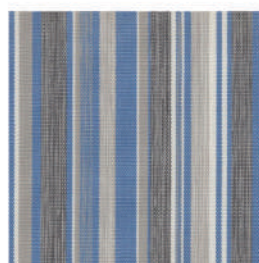
060



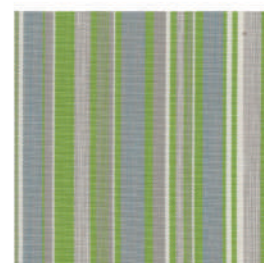
180



043



121



021

PRODUCT BENEFITS



Hygiene Protection

Safe for your health. Sunproof fabric is specially treated with sanitized product for hygiene protection. This product inhibits microbial developments and mould stains.



Waste Water Reduction

With our technology process, eliminates the harmful chemical effluents if dyeing process and reduce the water usage.



Outstanding Color Fastness

Strong color fastness to artificial weathering. Some fabrics if exposed to sunlight for an extended period will fade or lose their intensity of color.



Wide Range of Colors & Designs

Sunproof provides choices. Every individual may have different taste and different color preferences. Therefore, wide variety of designs and colors are launched to the market to suit your needs.

Let us be a trend setter. Sunproof makes every effort to be the leader in providing you new colors and designs one-step-ahead of others.



Easy Maintenance

Extreme stain resistant. Sunproof fabric is carefully processed and has gone through a special treatment to reduce the fabric absorption of soil and stains. It keeps the fabric looking clean, fresh and new.

Water repellent. Sunproof fabric is protected by an invisible shield around each of its fiber to keep the fabric dry and clean. It is a natural anti adhere.



Superb UV Protection

High UV Protection rating. Sunproof fabric has gone through high quality of testing and evaluated by an internationally recognized research and service centre, the Hohenstein Institute, Germany.

Proven Quality. Sunproof has obtained UV Standard 801 certificate - protect 80 which means it is capable of blocking more than 97% UV Ray.



Environmental Friendly

Woven from 100% solution dyed olefin yarn. Sunproof has chosen to use the premium quality of Solution Dyed Olefin. Solution dyeing is a clean manufacturing process as the color is added before the yarn is extruded. It is friendly to the environment because no dye bath processes are used, eliminating waste effluents, which may pollute air and water. Sunproof fabric is 100% recyclable.



Excellent Weatherability

Resistant to UV damage and fading. Sunproof applies excellent ultraviolet blocking agents which protect polymer backbone of the fabric from the effect of UV radiation.

Perfect for all outdoor applications. Therefore as an outdoor fabric, Sunproof is proven to have a strong ability to withstand the effects of prolonged exposure to sunlight, wind, rain and humidity. It is long lasting.



Safe for Direct Skin Contact

Sunproof is Oeko - Tex certified. Oeko - Tex is the world's leading ecolable for textile. Being Oeko - Tex certified means Ateja Sunproof fabric are free of substances which might be harmful to humans and environment.



SCAN ME



www.sunproof.co.id

DESCRIPTION

	NEW CARTENZA	NEW SOUTHEND	VALTOS
Width [cm]	150	150	150
Weight [gr/m ²]	231	294	194
Abrasion Resistance [rubs]	14,000	20,000	20,000
Tensile Strength [N] Warp Weft EN ISO 13934 - 1	1,600 610	1,600 1,400	1,700 1,000
Tear Strength [N] Warp Weft EN ISO 13937 - 3	151 60	140 140	124 70
Seam Slippage [mm] Warp Weft prEN ISO 13936 - 2 (Load applied 180 N)	4 4	5 4	3 4
Color Fastness to Rubbing [grade] Dry Rubbing Wet Rubbing EN ISO 105 - X12	4 - 5 4 - 5	4 - 5 4 - 5	4 - 5 4 - 5
Color Fastness to Artificial Weathering [grade] BS EN ISO 105 : B04	7 - 8	7 - 8	7 - 8
Water Repellency : Spray Test [grade] AATCC Test Method 22 - 2005	70	70	70
Colorfastness to Chlorinated to Pool Water [grade] BS EN ISO 105 - E03	4 - 5	4 - 5	4 - 5
Colorfastness to Sea Water [grade] BS EN ISO 105 - E02	4 - 5	4 - 5	4 - 5
FLAMMABILITY	Pass	Pass	Pass
• Cigarette (BS EN 1021 - 1)			
Anti Mildew AATCC 30 : 2017	Pass	Pass	Pass
Anti Bacterial AATCC 147 : 2011	Pass	Pass	Pass
Pilling Resistance [grade] EN ISO 12945 - 2 [after 2.000 rubs]	5	5	5
Soil Release [grade] AATCC 130	5	5	5
Dimensional Stability to Washing [%] EN ISO 6330	- < 1.0	- < 1.0	- < 1.0
Weatherability [hours] ASTM G53 - 96	1,500	1,500	1,500
Extreme Working Temperature -30°C / +70°C	Pass	Pass	Pass

COMPOSITION : OLEFIN 100%

TECHNICAL DATA

<u>NEW STINSON</u>	<u>NEW WIFERA</u>	<u>NEW PALLAZO</u>	<u>MAHANA</u>	<u>TAVIRA</u>
140	150	140	150	150
284	231	284	176	253
12,000	12,000	12,000	12,000	25,000
1,700 1,300	1,500 1,100	1,750 1,600	1,200 800	1,300 1,100
180 150	115 85	185 160	75 60	150 70
4 4	4 4	4 4	4 5	4 5
4 - 5 4 - 5	3-4 4 - 5	4 - 5 4 - 5	4 4 - 5	4 - 5 4 - 5
7 - 8	7 - 8	7 - 8	7 - 8	7 - 8
70	70	70	70	70
4 - 5	4 - 5	4 - 5	4	4 - 5
4 - 5	4 - 5	4 - 5	4 - 5	4 - 5
Pass	Pass	Pass	Pass	Pass
Pass	Pass	Pass	Pass	Pass
Pass	Pass	Pass	Pass	Pass
5	5	5	5	5
4 - 5	4 - 5	4 - 5	5	5
- < 1.0	- < 1.0	- < 1.0	- < 1.0	- < 1.0
1,500	1,500	1,500	1,500	1,500
Pass	Pass	Pass	Pass	Pass

 **ATEJA**[®]

